

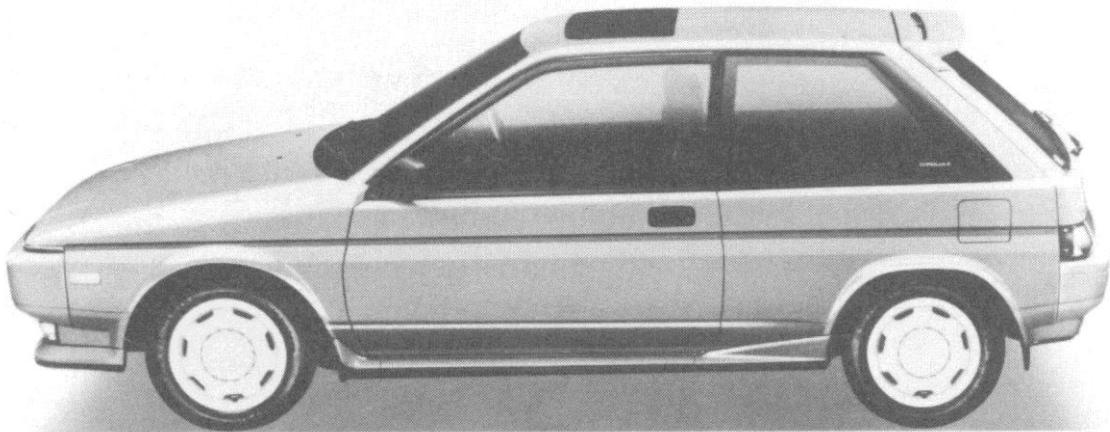
May 20, 1986 (No. 23-86)

For immediate release

TOYOTA ANNOUNCES NEW TERCEL, CORSA AND COROLLA II

- Two-box models available in three body types featuring new, high-performance engines —
- Minor changes also announced for three-box models of Tercel and Corsa —

Toyota City — TOYOTA MOTOR CORPORATION is introducing full model changes to two-box models of the Tercel, Corsa and Corolla II for nationwide release from today. Minor changes have also been made in the three-box, four-door sedan models of the Tercel and the Corsa.



COROLLA II 3-DOOR RFTRA 1.5 SR

- more -

Customers of two-box cars have increasingly been calling for improved quality and performance along with more individuality, sportiness, fashionability and economy. With the new Tercel, Corsa and Corolla II, Toyota offers a more comprehensive product lineup to meet users' changing demands.

1. Exterior Styling

The new two-box Tercel, Corsa and Corolla II are available in three body styles: three-door with and without retractable head lamps, and a five-door model.

2. Engine

The following three high-performance engines are available for the new Tercel, Corsa and Corolla II: the new 1.5-liter, 12-valve 3E and 1.5-liter, 1N diesel turbo, and a 1.3-liter, 12-valve 2E.

1) 3E Engine

The 1.5-liter, 4-cylinder, 12-valve 3E engine is a version of the 2E with a longer stroke. With its three valves — two for intake and one for exhaust — and V-type carburetor, this lightweight, compact engine produces maximum output of 79 ps (net) at 6,000 rpm.

2) 1N Diesel Turbo

The 1.5-liter, 4-cylinder, 1N Diesel Turbo is also a lightweight, compact engine, and has been developed especially for FWD passenger cars. This superior diesel engine achieves outstanding fuel economy of 38.2 km/l at a constant 60 km/h. The engine owes its low vibration and quiet running to computer-assisted structural analysis, which has allowed optimum design of its major parts.

3. Drive train

1) Suspension

The suspension employs MacPherson struts at the front and a trailing twist-beam at the rear with a new built-in stabilizer. This combination ensures improved handling and running stability.

2) Automatic Transmission

Three types of automatic transmission are offered: 4-speed with 2-way overdrive, 3-speed with 2-way, and 3-speed.

4. Interior

For the new Tercel, Corsa, and Corolla II, the following features are available as either standard or optional equipment depending on grade.

1) Dual-slide seat

This specially designed driver's seat comfortably accommodates drivers of all statures. This has been

- more -

achieved through a "dual-slide" function in which the seatback moves horizontally along the seat cushion as the seat position itself is adjusted. This affords better seating position and greater visibility.

2) Shoulder-belt guide

Designed to conform to the stature of the driver, the guide on the center pillar allows the shoulder belt anchor to be adjusted up or down. This provides a more comfortable, snug fit of the belt over the driver's shoulder.

Changes to the 3-Box Models of the Tercel and the Corsa

Minor changes to the 3-box versions of the Tercel and the Corsa include detailing changes to the front grill, dashboard and interior decor.

More models have joined the 4WD lineup. In addition, the Toyota Electronic Modulated Suspension (TEMS) is now available for 4WDs.

#

SPECIFICATIONS

Car type	3-door r*		3-door		5-door		4-door FF		4-door 4WD		
	1.5VS	1.3VC	1.3VC**	1.5VX	1.3VC	1.5VL	1.5 diesel turbo VC	1.3VC	1.5VE	1.5VL	1.5VS
Length (mm)	3865										
Width (mm)	1625										
Height (mm)	1370		1375		1380		1615		1625		
Wheelbase (mm)	2380										
Tread front (mm)	1380										
rear (mm)	1375										
Curb weight (kg)	800	840	840	840	820	830	870	840	860	-	-
w/ AT (kg)	890	820	880	880	840	850	-	-	880	-	-
Engine model	3E	2E	3E	3E	2E	3E	IN-T	2A	3A	3A	3A-S
type	In-line 4-cylinder OHC										
Displacement (cc)	1456	1295	1456	1456	1295	1456	1453	1295	1452		
Bore x stroke (mm)	73.0x87.0	73.0x77.4	73.0x87.0	73.0x87.0	73.0x77.4	73.0x87.0	74.0x84.5	77.5x77.0			
Compression rate	9.3	9.5	9.3	9.3	9.5	9.3	22.0	9.3			
Max. output (ps/rpm)	79.0/6000	73.0/6000	67.0/6000	79.0/6000	73.0/6000	79.0/6000	67.0/4700	75.0/6000 (gross)	85.0/5600 (gross)	90.0/6000 (gross)	
Max. torque (kg-m/rpm)	12.0/4000	10.3/4000	10.0/3600	12.0/4000	10.3/4000	12.0/4000	13.3/2600	10.9/3600 (gross)	12.0/3600 (gross)	12.0/4000 (gross)	
Fuel consumption (km/l***)	15.0	17.6	21.0	16.6	17.6	16.6	37.0	16.0	15.2	12.2	
(w/ AT)	13.0	-	-	13.0	13.4	13.4	****	-	13.2	10.8	
Fuel injection	V carburetor										
Fuel capacity (l)	45										
Suspension	MacPherson struts										
front											
rear	Trailing twist-beam										
Steering	Rack and pinion										
Brake	Disk										
front											
rear	Drum										
	Dual-link struts										
	4-link lateral-rod rigid axle										

Notes: * Retractable ** Fuel economy model *** 10-mode **** at constant 60 km/h ***** Injection pump